

TECHNICAL DATA SHEET No. ELE19 – 60 kv

Reece Safety Products Ltd

Unit B9, Lowfields Close, Lowfields Business Park, Elland, West Yorkshire HX5 9DX

Tel: 01422 310456 Fax: 01422 311070 Email sales@reecesafety.co.uk www.reecesafety.co.uk



Product Information and Assembly Instructions - SAFETY RESCUE HOOK 60kV

Description: S shaped hook for the safe removal of electric shock victims from live high voltage installations - e.g. at HV Substations.

The hook enables the victim to be pulled clear by gripping the arms, legs, armpits, ankles etc. (See Pic. 2)

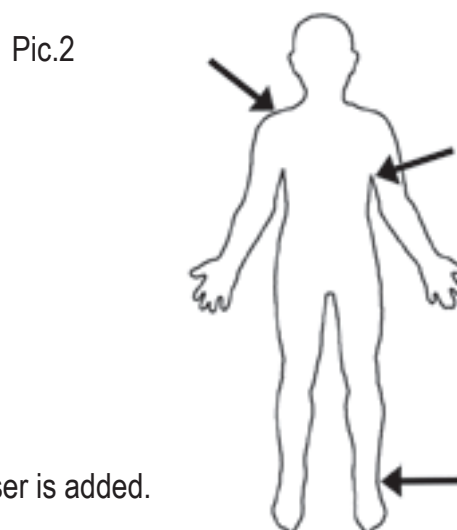
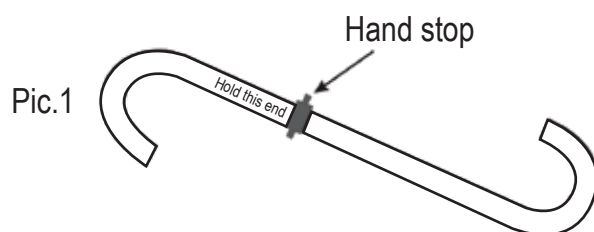
The safety gripping limit is marked with a black hand stop. (See Pic. 1).

Material: Natural colour HD polyethylene 35mm Ø, with high temperature stabiliser additive.

Excellent chemical resistance

Technical Specification:

Density:	0.950 g/cm ³
Voltage Creepage Path Resistance:	600 V
Elongation before break:	300%
Bending E Modulus:	800N/mm ²
Tensile E Modulus:	≥ 600N/mm ²
Tensile Strength:	≥ 15N/mm ²
Ignition Temperature:	Approx. 350 °C
Operating Temperature Range:	-50 to +70 °C



This device is only to be used and stored indoors, since no U.V. stabiliser is added.

It should not be exposed continuously to strong sunlight.

Anticipated Life: 10 years. After this time the hook should be renewed.

The year of manufacture is embossed on the hook.

Disposal Instructions:

1. Sent to a plastics recycling collection point.

2. Follow COSH regulations for disposal of Polythene, i.e. at an approved regranulating or waste incineration site.

Length: 1950 mm *

Diameter: 35mm *

* The stated dimensions are minimum values.

IMPORTANT!

Always switch off the power supply when an emergency rescue is undertaken, whenever this is possible.

The First Aider should always assume that he/she is working on a live installation, and use the emergency safety hook.

There is always the possibility of a back feed or a charged Power Capacitor on systems where the emergency is taking place.